

Color Temperature:



Total Lumen Output:
2831 lm

Light Quality:



Peak:
21466 cd

Light Efficiency:



Power: 94.8 W



CIE 1931
x: 0.376
y: 0.338

Test: CRI Value

Date: 3/26/2018

Voltage: 115 V

Current: 0.840 A

Frequency: 60 Hz

CRI: 90.4

CQS: 86.0

TM30: 81.3

Note:

R @ 195

G @ 56

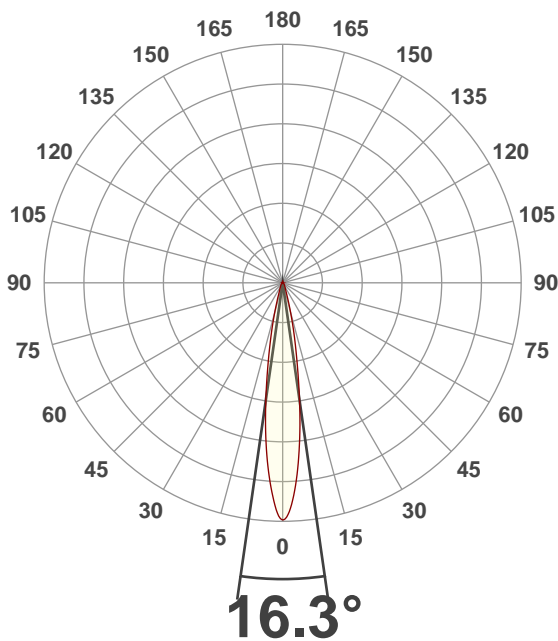
B @ 37

W @ 255

A @ 255

L @ 255

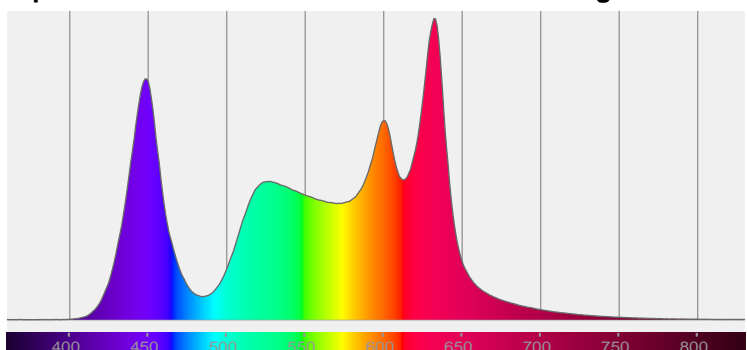
Beam Angle



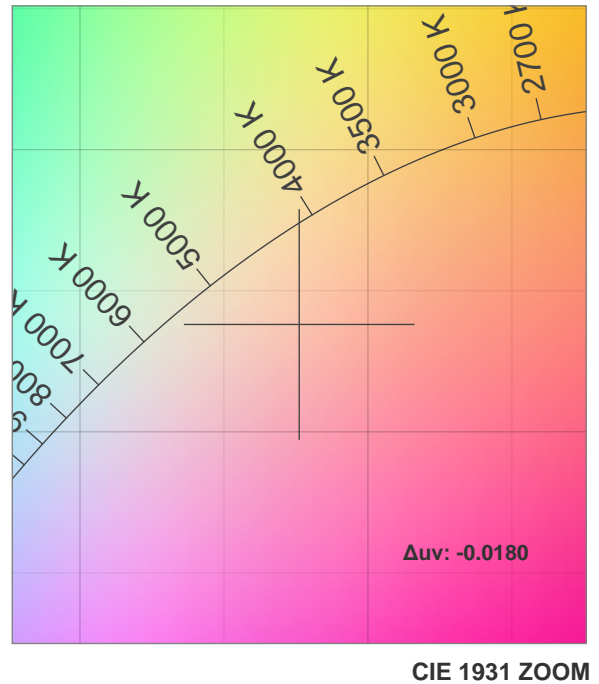
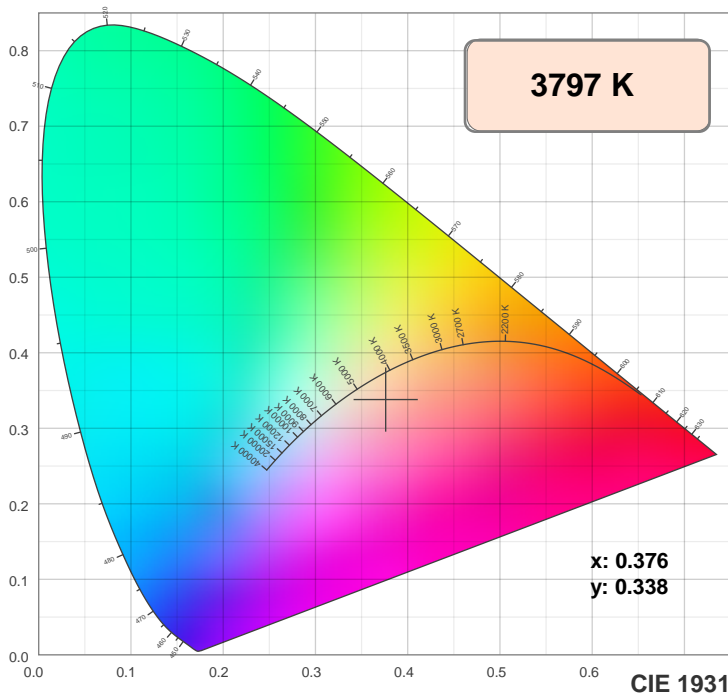
Beam Angle 50%	Field Angle 10%	Cutoff Angle 2.5%
16.3°	32.2°	50.6°

Spectra

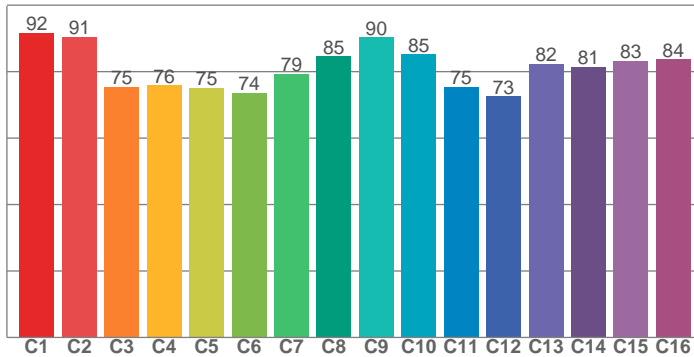
Dominant Wavelength: 600nm



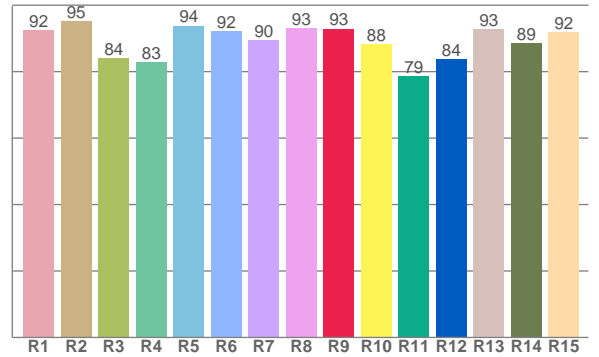
Color Details



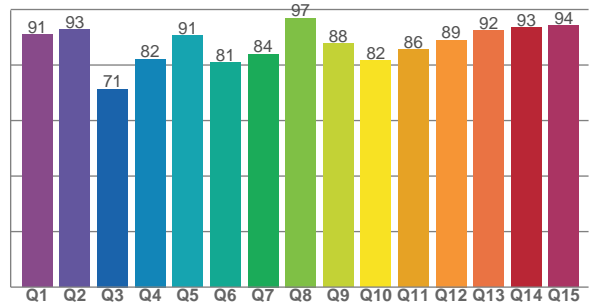
TM30: 81.3



CRI: 90.4 (R1-R8)



CQS: 86.0



CRI R values, only R1-R8 are used to calculate final CRI value

R1	R2	R3	R4	R5	R6	R7	R8	R9	R10	R11	R12	R13	R14	R15
92.4	95.2	84.0	82.8	93.9	92.1	89.5	93.0	92.9	88.3	78.6	83.7	92.9	88.6	91.9

TM30 C Values, 16 binned values out of total of 99 C values

C1	C2	C3	C4	C5	C6	C7	C8	C9	C10	C11	C12	C13	C14	C15	C16
91.6	90.6	75.5	75.8	75.1	73.5	79.4	84.6	90.3	85.2	75.4	72.6	82.4	81.4	83.2	83.8

CQS Q Values

Q1	Q2	Q3	Q4	Q5	Q6	Q7	Q8	Q9	Q10	Q11	Q12	Q13	Q14	Q15
90.9	92.7	71.4	82.1	90.7	80.9	83.9	97.0	87.7	81.6	85.6	89.0	92.4	93.4	94.1

Color Parameters

Color Temperature	Color Rendering Index	Red Component	Color Fidelity	Color Gamut	Color Quality Scale	Color Coordinate CIE 1931	Color Coordinate CIE 1931	Color Coordinate	Color Coordinate	Color Deviation from Black Body
CCT	CRI	CRI R9	TM30 Rf	TM30 Rg	CQS	x	y	u	v	Δuv
3797 K	90.4	92.9	81.3	111.2	86.0	0.376	0.338	0.239	0.322	-0.0180

TM30 Details

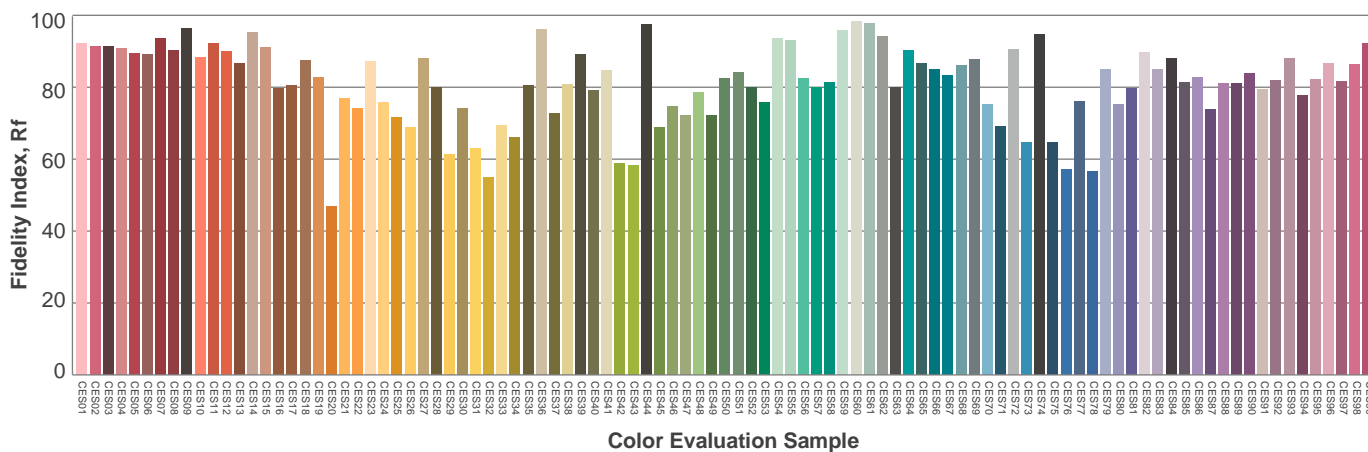
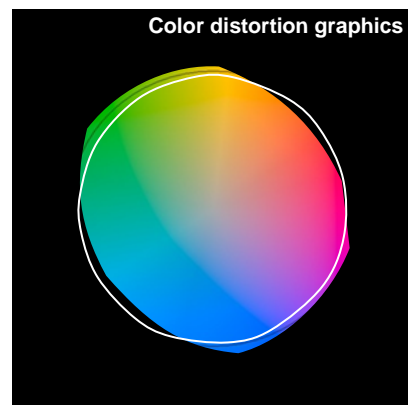
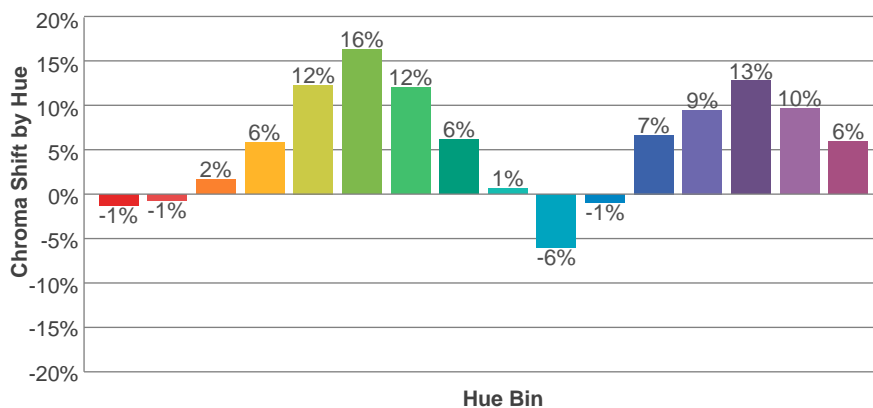
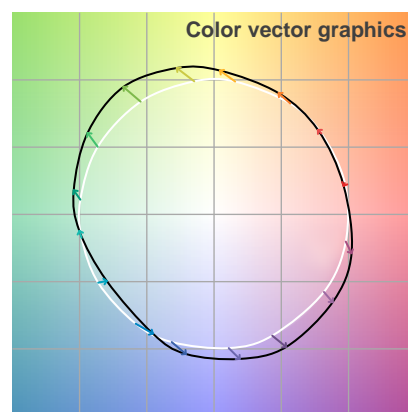
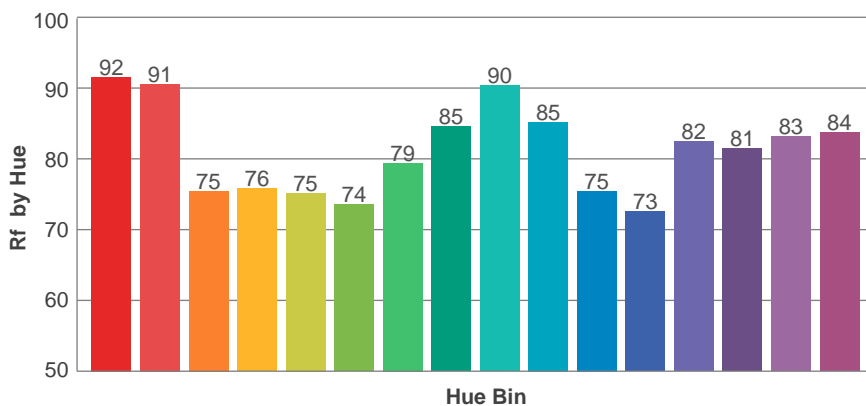
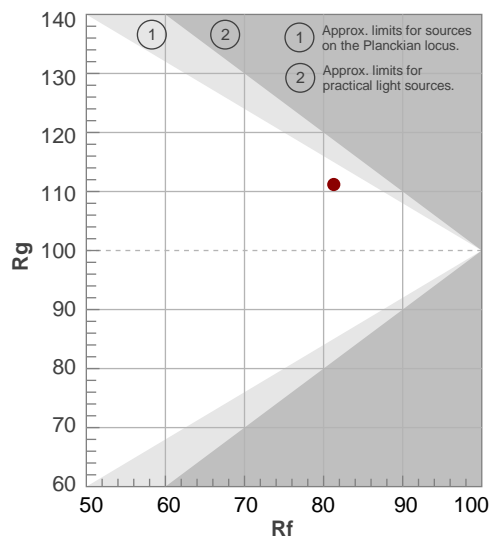
Rf 81.3

Fidelity Index Rf

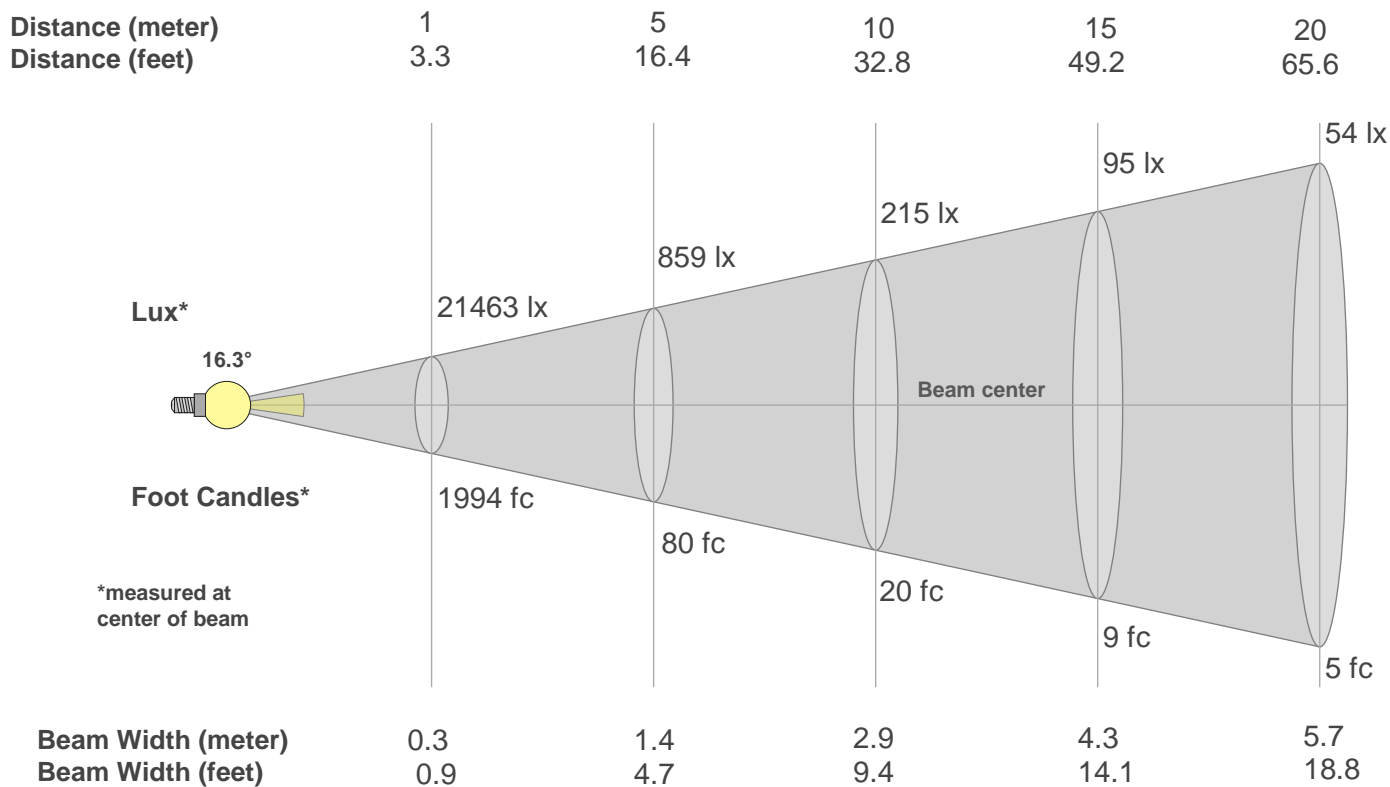
Rg 111.2

Gamut Index Rg

Hue Bin	R _f	Graphic shifts (%)	
		Chroma	Hue
1	92	-1%	-2%
2	91	-1%	4%
3	75	2%	12%
4	76	6%	13%
5	75	12%	11%
6	74	16%	5%
7	79	12%	-4%
8	85	6%	-6%
9	90	1%	-5%
10	85	-6%	2%
11	75	-1%	15%
12	73	7%	12%
13	82	9%	6%
14	81	13%	4%
15	83	10%	-3%
16	84	6%	-8%



Beam Details



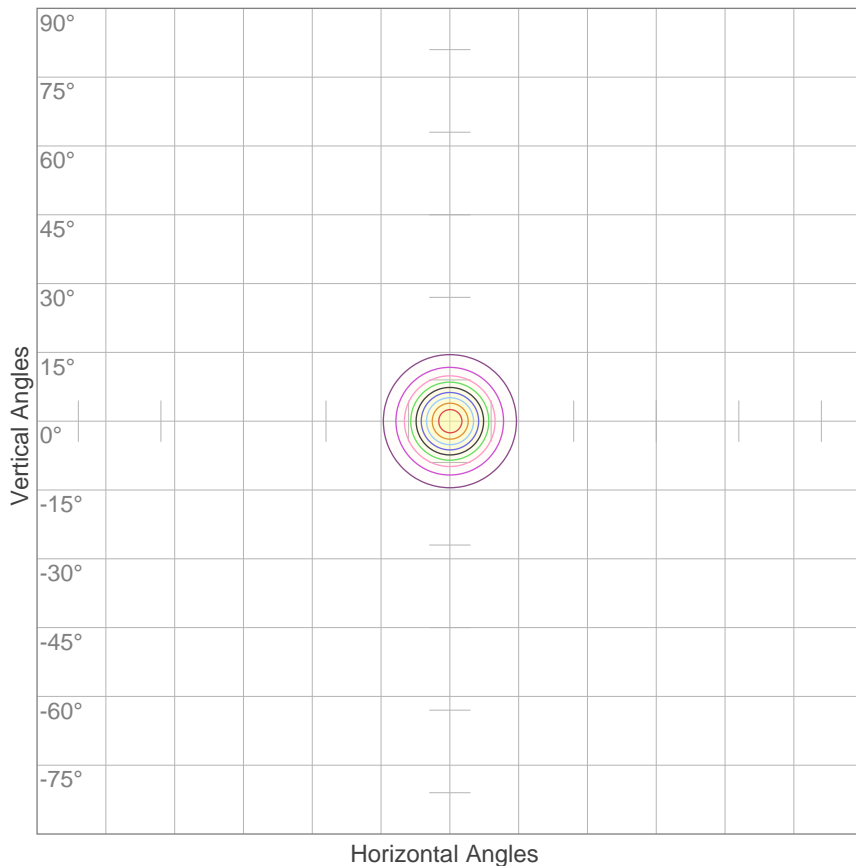
Beam Intensities from 1-20m

m	1	2	3	4	5	6	7	8	9	10	11	12	13	14	15	16	17	18	19	20
ft	3.3	6.6	9.8	13.1	16.4	19.7	23	26.2	29.5	32.8	36.1	39.4	42.7	45.9	49.2	52.5	55.8	59.1	62.3	65.6
lx	21463	5366	2385	1341	859	596	438	335	265	215	177	149	127	110	95	84	74	66	59	54
fc	1994	498.5	221.6	124.6	79.8	55.4	40.7	31.2	24.6	19.9	16.5	13.8	11.8	10.2	8.9	7.8	6.9	6.2	5.5	5

Beam Angle 50%	Field Angle 10%	Cutoff Angle 2,5%	Intensity Ratio in 120° Cone	Intensity Ratio in 90° Cone
16.3°	32.2°	50.6°	98.1%	93.2%

ISO Diagrams

ISO Candela Diagram



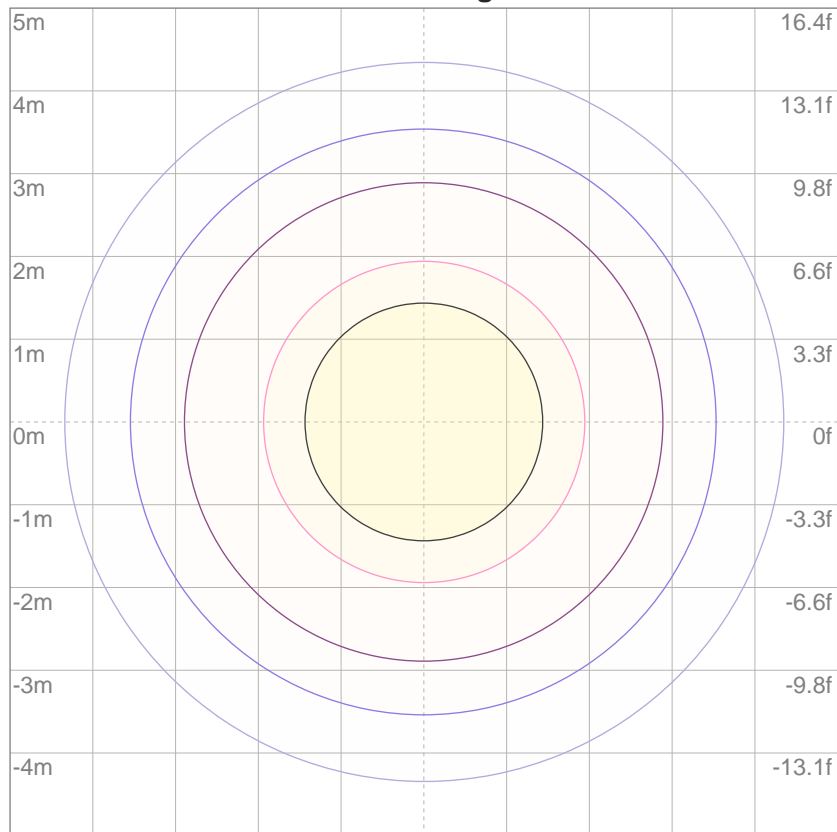
10%	2146 cd
20%	4293 cd
30%	6439 cd
40%	8585 cd
50%	10732 cd
60%	12878 cd
70%	15024 cd
80%	17171 cd
90%	19317 cd

Conditions:

Number of c-planes: 2

Candela at center: 21463 cd

ISO Lux Diagram



3%	6.44 lx
5%	10.7 lx
10%	21.5 lx
30%	64.4 lx
50%	107 lx

Conditions:

Number of c-planes: 2

Lux at center: 215 lx

*Lux distribution on a surface
when lamp is mounted at 10
meters from the surface.*

Mounting Height: 10 meters (33 feet)